

HENRY
MAINTAINS
HIS LIFE FORCE
THROUGH
MAGIC.

THE BACKGROUND OF
THE BASE'S GHOST...

JUST AS MANY
MAGES ENHANCE
THEIR OWN BODIES
WITH MAGIC TO
FIGHT...



THUS HE
CANNOT SURVIVE
WITHOUT EXPENDING
MANA... AND WHAT
ALLOWS HIM TO
DO THIS IS...

HIS ORGANS,
BLOOD VESSELS,
AND MUSCLES
HAVE ALL BEEN
CRIPPLED AND
ENFEEBLED.

MAGIC ABSORBING CONSTITUTION..

NEITHER
HIS FAMILY,
NOR THE WORLD
ACCEPTED HIM
AS HE WAS.

BUT
HE'S OUR
SON...!!

WE
CANNOT ALLOW
OUR FAMILY
NAME TO BE
TARNISHED
BY SUCH
TERRIBLE
EVENTS...!

I CANNOT
BELIEVE
THIS...! AT
THIS RIGHT,
HE MAY END
UP JUST
DYING...!

THOUGH HE
WAS BORN TO A
CERTAIN FAMED
NOBLE HOUSE,
HE WAS WEAK
AND FRAIL.

BLACK CLOVER

CREATED BY YUKI TABATA ♦ AND PRESENTED BY **mangastream.com**



CLEANED BY
PROSTYLE, TAKA, LAFAS



REDRAWS BY
TOUSHI



TYPESSETTING BY
RTSD, ZERO



TRANSLATED BY
DZYDZYDINO



PROVIDED BY
FRIEDRICH



NOTICE:

You can read this chapter and more at the source
in its original high quality: www.mangastream.com

DO NOT REHOST THIS CHAPTER.
PLEASE DON'T SUPPORT WEBSITES THAT DO.
CONSIDER BUYING THE OFFICIAL VOLUMES
WHEN THEY ARE AVAILABLE IN YOUR REGION.

WAS A RESERVE
OF MANA FROM
JUST ONE HOUSE
IN THE MIDDLE OF
THE FOREST, SO AS
TO KEEP THE VICTIMS
TO AN ABSOLUTE
MINIMUM.



SO WHAT THE
WARPED LOVE OF
HIERARCHICAL
SOCIETY GAVE
TO HENRY...

I WAS DEAD...



UNTIL EVERYONE CAME... I WAS DEAD...!



BUT I
WILL
SAVE
GAUCHE
...!!



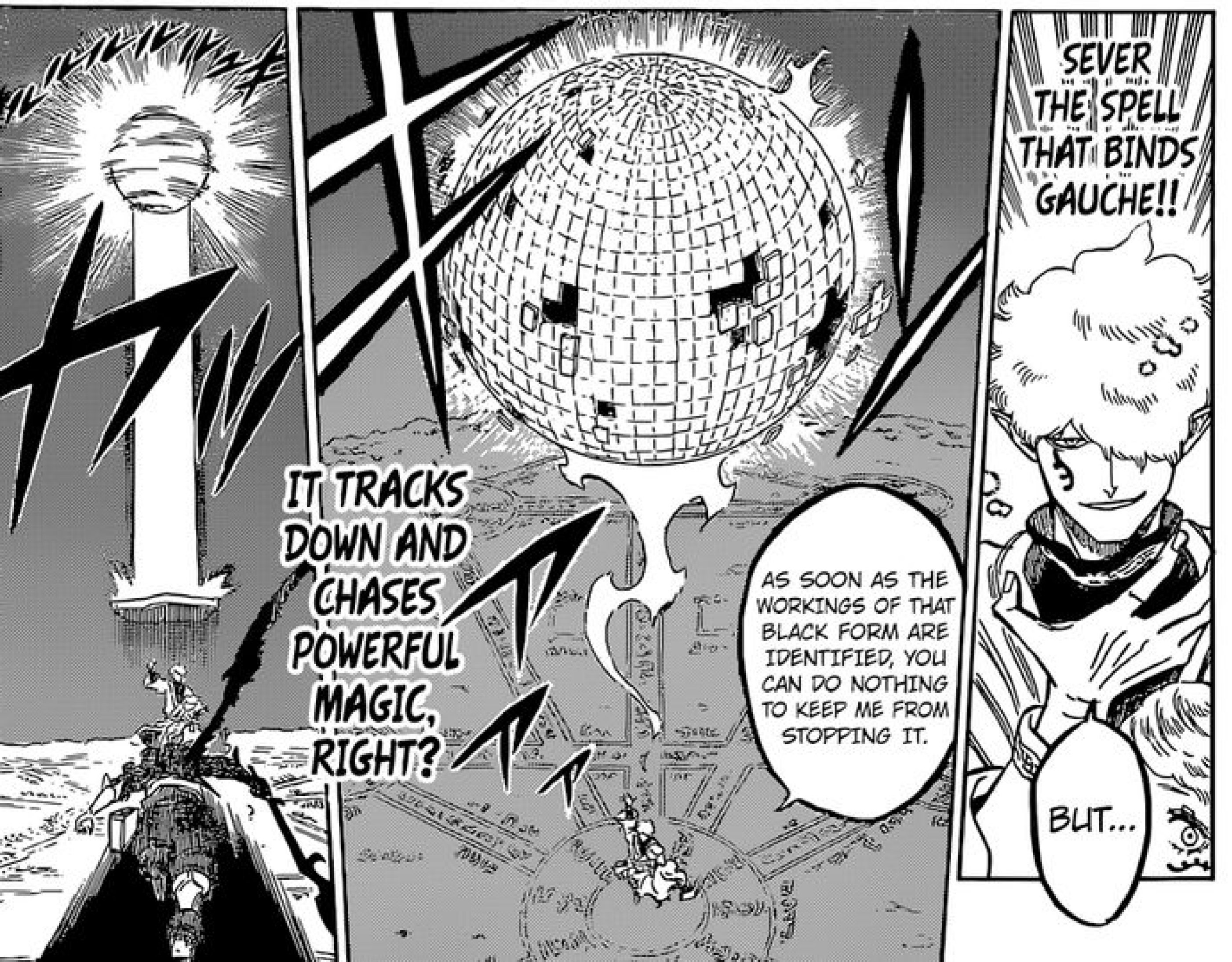
SO
I DON'T
CARE WHAT
HAPPENS
TO ME...

THIS
LIFE WAS
GIVEN TO
ME BY
EVERY-
ONE...



SEVER THE SPELL
THAT BINDS GAUCHE!!

田島裕基
yūki@tabata



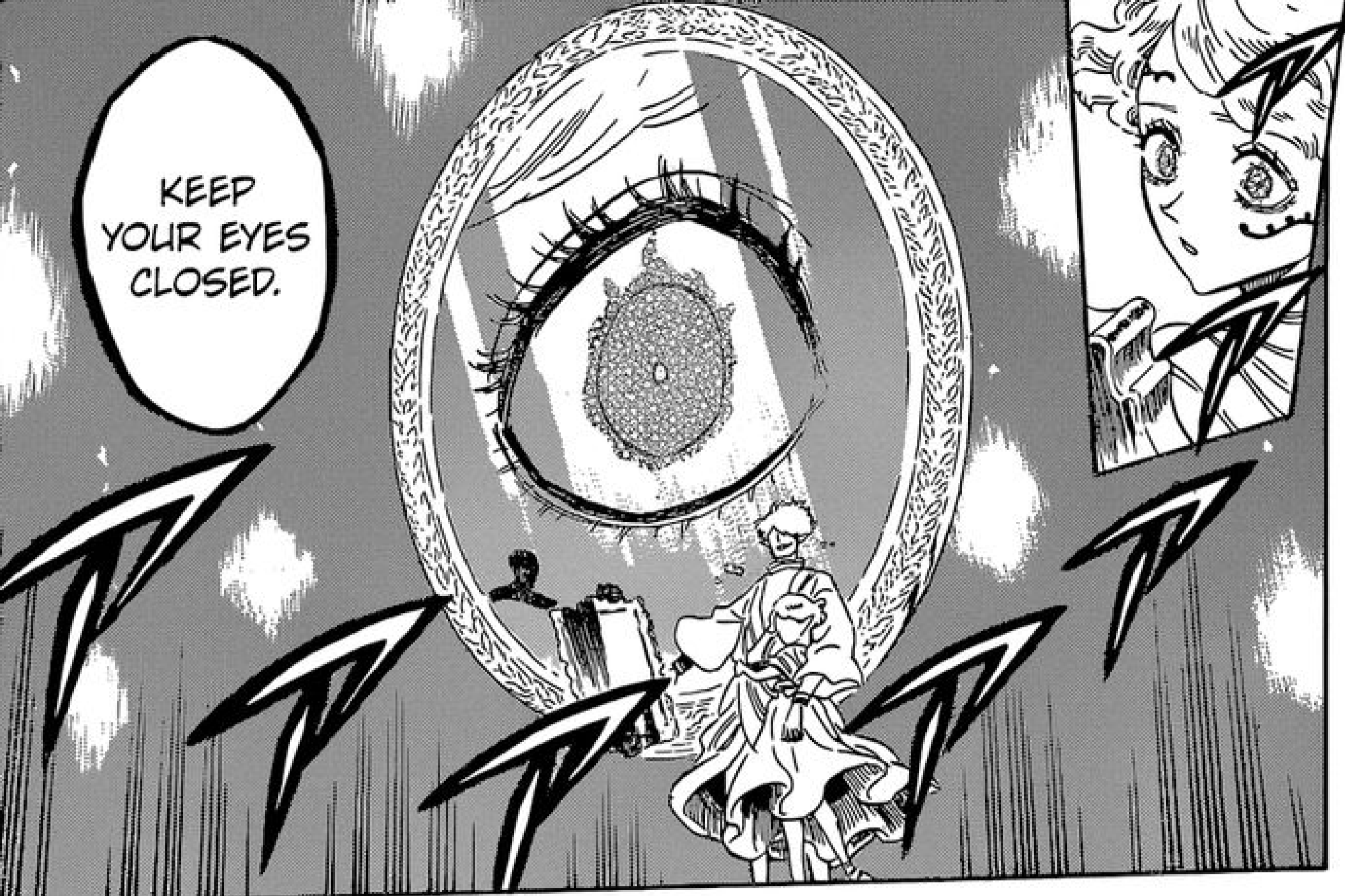
SEVER
THE SPELL
THAT BINDS
GAUCHE!!

IT TRACKS
DOWN AND
CHASES
POWERFUL
MAGIC,
RIGHT?

AS SOON AS THE
WORKINGS OF THAT
BLACK FORM ARE
IDENTIFIED, YOU
CAN DO NOTHING
TO KEEP ME FROM
STOPPING IT.

BUT...





KEEP YOUR EYES CLOSED.



PARDON
LUUUUUU
LUUUUS!!



EEEE-
EVERRY-
OOONE
GEEET
IIIIIN
HEERE!

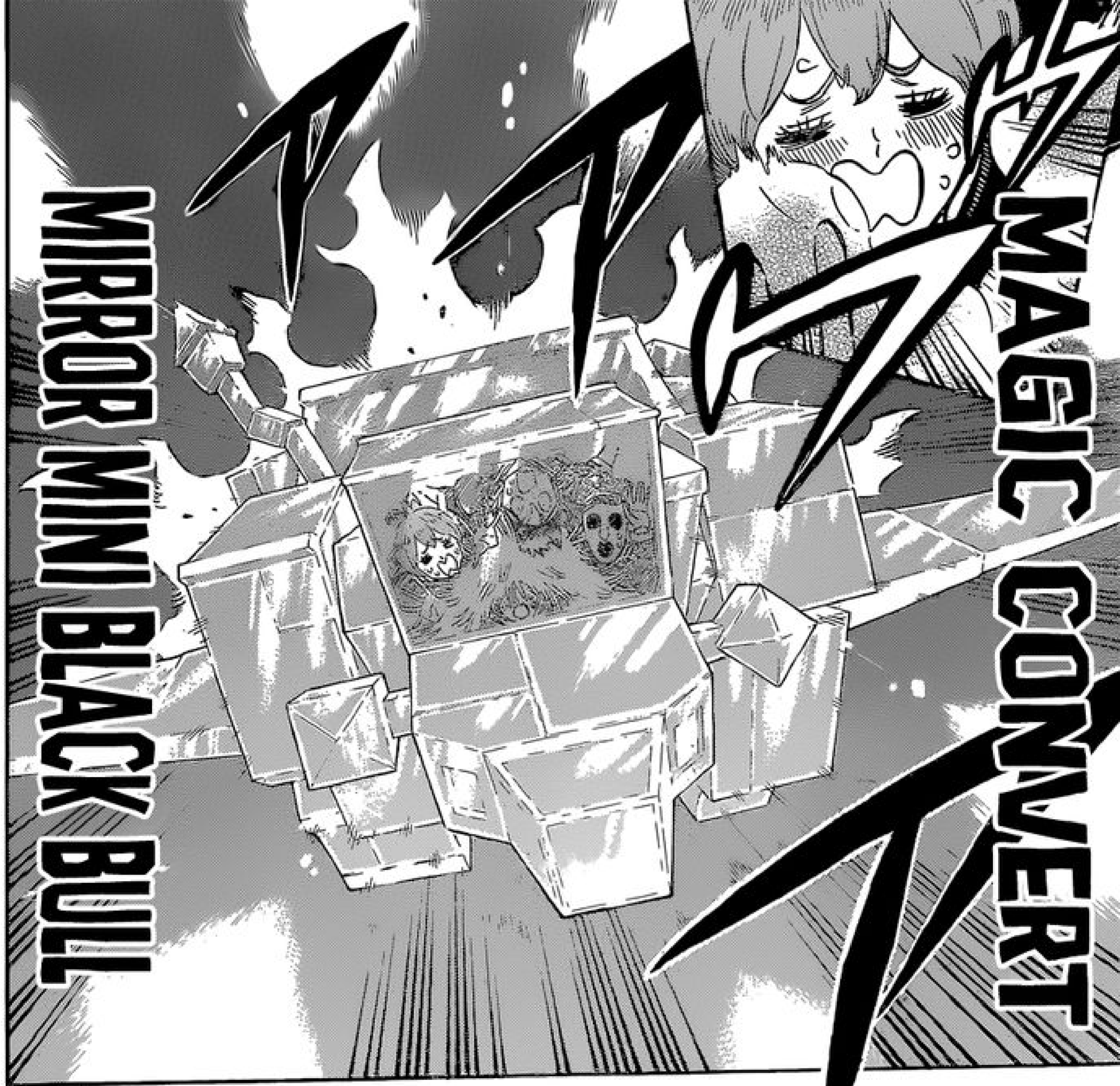


DWAA
AAAA
AGH
....!!



I'VE ALREADY
FULLY GONE
THROUGH THE
FORM TWICE,
SO IF I DO IT A
THIRD TIME IT'S
SURE TO RUN
OUT PARTWAY
THROUGH....!!

RIGHT NOW,
I'M ONLY ABLE
TO GO INTO MY
BLACK FORM
ABOUT 2.5
TIMES...!

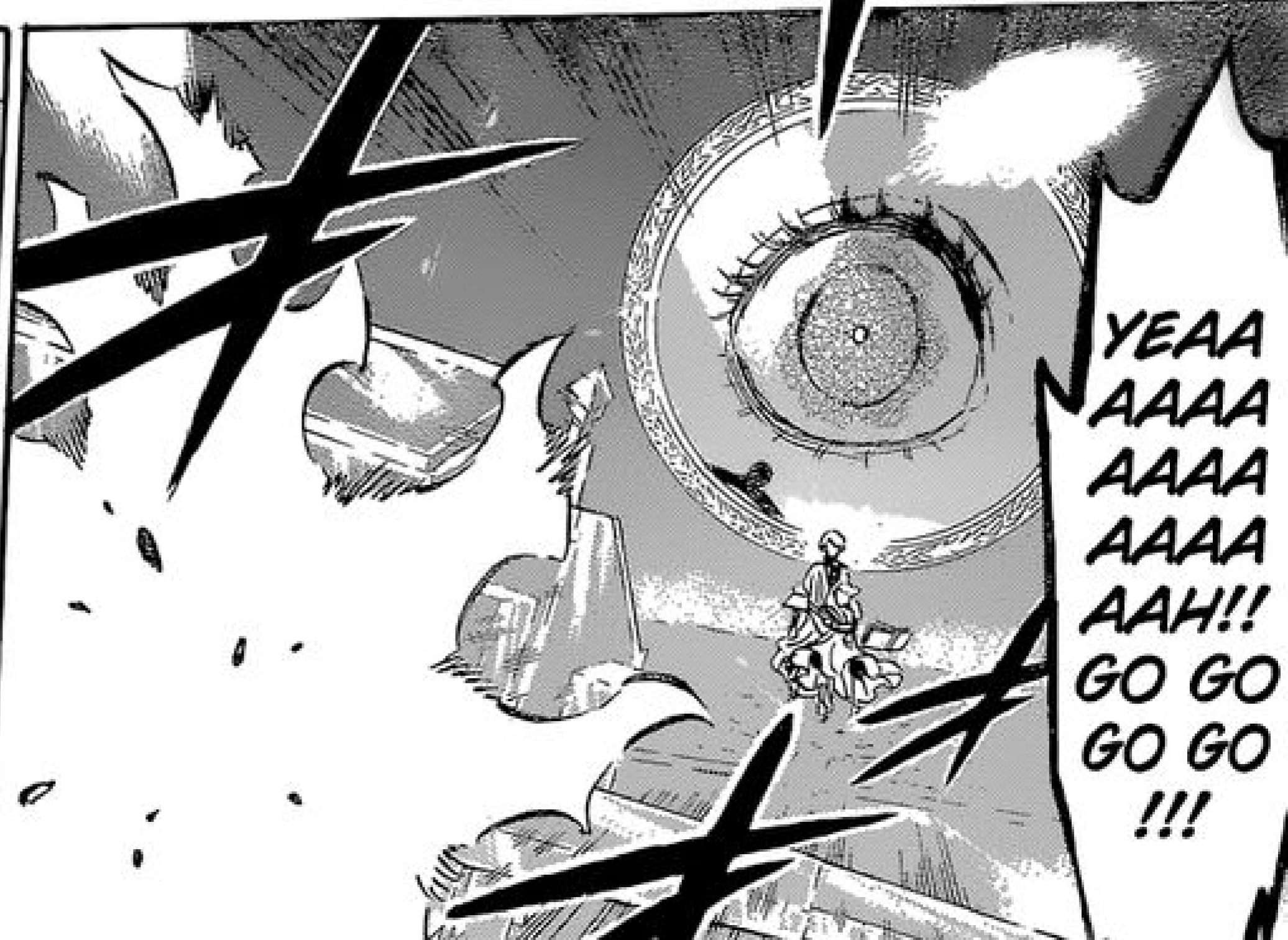


MIRROR MINI BLACK BULL

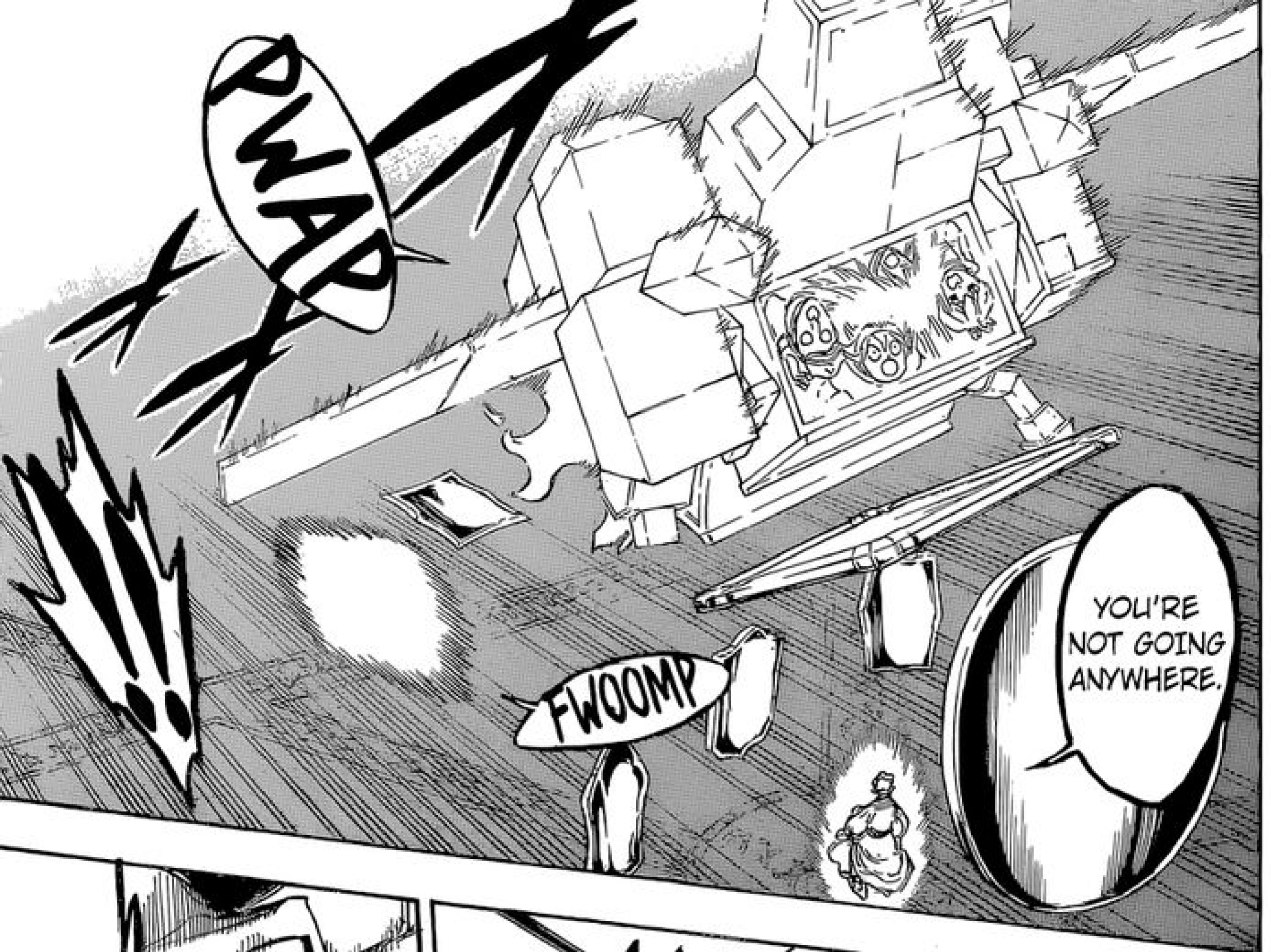
MAGIC CONVERT



IT
WON'T
BE SO
EASY...



YEEA
AAAA
AAAA
AAAA
AAH!!
GO GO
GO GO
!!!



...
HENRY
?!



OR
PERHAPS
TRYING TO
COMMIT
GROUP
SUICIDE
AND SAVE
THEM THE
SUFFER-
ING?



NO...



TRYING
TO DIE AN
HONORABLE
DEATH?
GO DOWN
FIGHTING?





IS ME.

THE ONLY ONE THAT'S GOING TO DIE...



MY MANA... IS BEING DRAINED...

WH... AAT...?



WHEN I'M OUTSIDE OF THE BASE, MY LOOP OF MAGIC ABSORPTION IS BROKEN...!!!
AND SINCE THIS ISN'T MY MAGIC, YOUR EYE MAGIC CAN'T DEFEND AGAINST IT!!!



THAT'S THE ONLY REASON I'VE BEEN LIVING UP TILL NOW.

IN ORDER TO SAVE MY FRIENDS...

MY MANA
POOL IS NOT
SO TINY THAT
IT WOULD BE
SHAKEN BY
THIS LEVEL
OF DISRUP-
TION...!!



...BUT IT'S
USELESS...!!



THAT I WAS
ABLE TO DIE
FIGHTING
ALONGSIDE
EVERYONE
ELSE WAS
ENOUGH
FOR ME...

THAT'S
FINE... THIS
WAS... MY
DUTY...

IIIISSSS
IINNNNNN
YOUUUUURR
HAAAAAAA-
AAANNDSS...

WITH THE
OPENING
I CREATED,
I'M SURE THE
OTHERS WILL
BE ABLE TO
STOP YOU.

YOU'RE
THE ONLY ONE
THAT'S GOING
TO DISAPPEAR
....!!



YOU'RE NOT DYING YET, HENRY!!

MANGA STREAM
DO NOT MIRROR



DON'T WORRY!
I DON'T HAVE ANY MANA TO DRAIN!!

I HEARD ABOUT YOU FROM CAPTAIN YAMI!

PLEASED TO MEET YOU!
I'M THE NEWEST MEMBER HERE, ASTA!!

...YOU'RE HENRY, RIGHT?
YOU'VE GOT SOME STRANGE ILLNESS THAT DRAINS PEOPLES' MANA?

SOOOOOME
DAAAAY I'LL
LEAAAAVEEE
THIIIIIISS
ROOM OON
MYYY OWW-
WWWNN.

AS SOON
AS I'M ABLE
TO CONTROL
MY MAGIC
ABSORBING
BETTER...

BUT THEY'RE
ALL A BUNCHA
ROWDY, WILD
MAGES ANYWAY!

THOUGH
...THAT'S
COMING
FROM
ME...

SINCE
YOU'RE ALWAYS
TAKING THEIR MANA,
YOU FEEL AWKWARD
ABOUT GOING AND
MEETING THEM...?
DON'T WORRY ABOUT
THAT! I'M SURE
THEY'RE FINE
WITH IT!

I'M
SURE...

THAT WHEN
YOU ACTUALLY
MEET EVERYONE,
THINGS WILL BE
EVEN MORE
FUN!!

WELL, I'LL BE
WAITING FOR
THAT DAY TO
COME!

...I
SEE...!

WITH MY
FRIENDS
...!!

I WANT
TO LIVE...

I DON'T
WANT TO
DIE.

AHH...



LET'S LIVE
TOGETHER
....!!



POISON MAGIC - VERBOTENE FRUCHT



**RE-
LEASE
!!**

**I
DON'T
WANT...**

**TRANS-
FORMA-
TION...**

**TO
LOSE EVEN
ONE OF MY
FRIENDS
...!!!**

THAT
MEANS
YOU,
TOO
!!

GALL
LULL
LULL
CHE
!!!

AS IF THEY'D
EVER GIVE UP...!!!



BLACK CLOVER

...CH. 188
/ END

MANGA
STREAM
DO NOT MIRROR